

Get involved! Connect with over 20 Student Organizations, many who meet weekly in the Center

Undergraduate Organizations

Queer Alliance is a coalition of LGBT undergraduate student groups, which includes:

- **BlaQue:** a pan-African LGBT student group
- **Fluid:** a discussion/social based group for bisexual/pansexual related issues
- **La Familia:** a Latina/o LGBT student group
- **Pan Asian Queers (PAQ):** an Asian Pacific Islander LGBT student group
- **Project 1:** a community outreach project that helps LGBTQQA high school youth through tutoring and peer mentorship
- **Queer X Girl:** a multi-issue political and social group for queer, lesbian, bisexual, and transgender women and allies of all genders
- **Spectrum:** This space acts as a support group and social gathering place to discuss issues concerning the community as a whole

Cornerstone is a Catholic LGBTQ organization providing support, community & advocacy

Delta Lambda Phi is the nation's largest, as well as UCLA's only fraternity for gay, bisexual, and progressive men

Gamma Rho Lambda is a non-traditional all-inclusive LGBTQQIAA social sorority. GRL focuses on developing unity through the lifelong bonds of sisterhood and family

Outwrite News Magazine (formerly Ten Percent) is a lesbian, gay, bisexual, transgender, intersex, and queer news magazine

TransUP is UCLA's Transgender and genderqueer-centered group focusing on social equality through discussions and advocacy



Graduate Organizations

UCLA Lambda Graduate Student Network (LGSN) brings together UCLA's LGBT graduate students through a range of networking events

Out@Anderson is a network for gay, lesbian, bisexual, and transgender students at the Anderson School of Management

OUTlaw is a community of LGBTQI students at the School of Law that engage in educational outreach, political activism, and public service

MedGLO is the social and support network for LGBTQ medical students and faculty

Library & Archive OUTreach serves the information needs of the LGBT professional library and archival community at UCLA

PRIDE at UCLA Luskin encourages LGBTQI education, social justice, and activism and provides a welcoming and inclusive community for LGBTQIA students in the Luskin School of Public Affairs.

Queers for Public Health (QPH) builds and supports a queer community with presence in the School of Public Health and broader health science campus through educational events and social networking

For more information on these organizations, please visit www.lgbt.ucla.edu

Campus Resources

Ashe Health & Wellness Center (310) 825-4073
www.studenthealth.ucla.edu

Bruin Resource Center (310) 825-3945
www.brc.ucla.edu

Student Organizations Leadership & Engagement (310) 825-7041
www.studentactivities.ucla.edu

Counseling & Psychological Services (310) 825-0768
www.counseling.ucla.edu

Dean of Students Office (310) 825-3894
www.deanofstudents.ucla.edu

Graduate Student Resource Center (310) 267-4805
www.gsrc.ucla.edu

Office of Residential Life (310) 206-9876
www.orl.ucla.edu

Ombuds Office (310) 825-7627
www.ombuds.ucla.edu

Student Legal Services (310) 825-9894
www.studentlegal.ucla.edu



Scan the QR code with your smartphone's barcode reader to be taken to the LGBTCRC website!

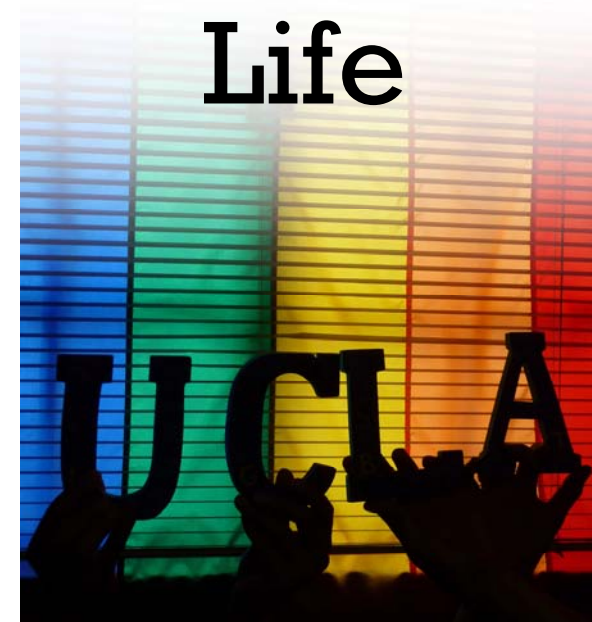
LGBT Campus Resource Center

Student Activities Center B36 • (310) 206-3628
www.lgbt.ucla.edu • lgbt@ucla.edu
www.facebook.com/UCLALGBT

*The LGBT Campus Resource Center
is a department within the
Division of Student Affairs*



Guide to LGBTQ Student Life



LGBT Campus Resource Center

Find us at Student Activities Center, B36



The Rae Lee Siporin Library



The David Bohnett Cyber Center



Contact Us:

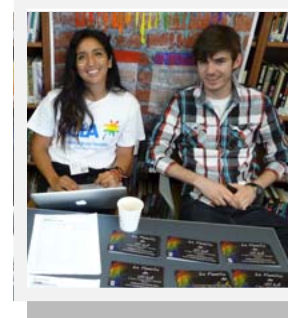
Student Activities Center B36 • (310) 206-3628
www.lgbt.ucla.edu • lgbt@ucla.edu
www.facebook.com/UCLALGBT

The UCLA Lesbian Gay Bisexual Transgender Campus Resource Center (LGBTCRC) provides a comprehensive range of education, information and advocacy services and works to create and maintain an open, safe and inclusive environment for lesbian, gay, bisexual, intersex, transgender, queer, questioning, and same-gender-loving students, faculty, and staff, their families and friends, and the entire campus community.

LGBTCRC Resources and Services:

- Our **Lounge & Safe Space** is a place to study, hang out and make new friends. Our lounge space consists of couches, tables, a TV and magazines, all for you!
- The **David Bohnett Cyber Center** is a safe space for students to access online resources, print, scan, and use Photoshop for free
- The **Rae Lee Siporin Library** provides over 4,000 books, DVDs, magazines, and is the largest LGBTQ resource collection at a college or university campus in the nation!
- **Rainbow Connection** is our online confidential chat program for LGBTQIA students. Chat with trained peer mentors who are ready to listen, share, and help.
- **Counselors-in-Residence** provide a space to chat with a professional, access resources, and learn to live healthy. Hours are listed at www.lgbt.ucla.edu/eventcalendar1.html
- **Queer Chats**, held weekly at the LGBTCRC, are casual discussions on LGBTQIA issues. For more information, visit www.lgbt.ucla.edu
- **Bruin Pride Newsletter** is a weekly email to the campus community with information on LGBTQ events. You can easily sign up at www.lgbt.ucla.edu/joinourlistservs1.html
- **Ally Workshops and Trainings** are available by request, please contact our office to arrange a training

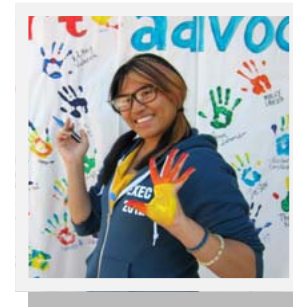
Annual Events



Welcome Home! Fall Resource Fair is the queer kick-off to the school year! Hosted every fall by the LGBTCRC, drop by to meet hundreds of fellow queers and allies on campus!

Queer Alliance's **National Coming Out Week** is filled with programs and events focused on issues of coming out. On National Coming Out Day (October 11), the LGBTCRC publishes the OUTlist in the Daily Bruin, which is a listing of LGBTQ people and allies that are proud and out on campus.

Ally Week is a collaborative event held annually during Spring Quarter, a week designed to strengthen and celebrate our ally community with fun and educational programs — including Pride Prom.



Lavender Graduation honors the achievements and academic success of LGBTQIA students as they complete their college career. LGBT Leadership awards are given by distinguished alumni and respected faculty to outstanding student leaders.

LGBT Studies

The **Lesbian, Gay, Bisexual, and Transgender Studies Program** is an interdisciplinary program that supports teaching and research on the historical and contemporary experience of lesbians, gay men, bisexuals, and transgendered people.

The LGBT Studies minor aims to acquaint students with some of the many different ways sexuality and gender have been organized in the past and the present and with a variety of approaches to studying sexuality and gender at the end of the twentieth century.

146 Humanities
(310) 206-0516
www.humnet.ucla.edu/humnet/lgbts
lgbts@humnet.ucla.edu

The Williams Institute

A national think tank at UCLA Law, **The Williams Institute** produces high quality research with real-world relevance and advances sexual orientation and gender identity law and public policy.

The Williams Institute offers **A Primer on Empirical Research on LGBT Issues and Populations**, a one-day workshop for graduate students pursuing research on sexual orientation issues. Training is free but space is limited. For more information visit:

[williamsinstitute.law.ucla.edu/
empirical-research-training/](http://williamsinstitute.law.ucla.edu/empirical-research-training/)

Public Policy Building Room 2381
(310) 267-4382
williamsinstitute.law.ucla.edu
williamsinstitute@law.ucla.edu